

## **BLACK & DECKER VALVE GRINDER**

### **TYPE T CHUCK**

### **BELT REMOVAL AND INSTALLATION** **INSTRUCTIONS**

**Step 1:** Remove Hand wheel (Fig. 1) by turning counter clockwise until it separates from the machine.



FIG 1

**Step 2:** Remove the belt cover (Fig. 2)

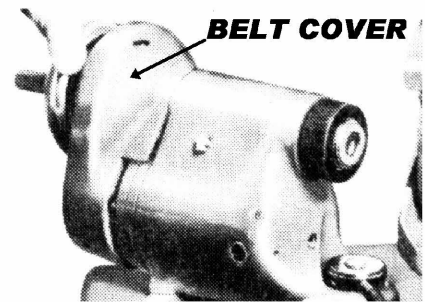


FIG 2

**Step 3:** Loosen 2 Set screws Shown in Fig 3.

**Step 4:** Use a hammer and punch (tap lightly) as shown in Fig 4 to unscrew the back half of the pulley. This needs to turn in a counter clockwise direction. This will loosen the tension on the old belt. Unscrew as necessary so as to get enough slack in the belt to remove and install new one.

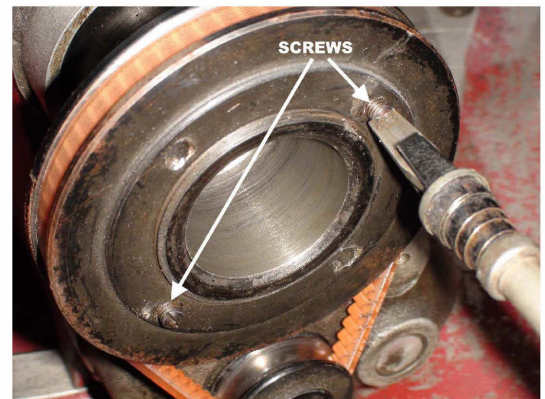


FIG 3

**Step 5:** Now you can remove the old belt and install the new one.

**Step 6:** Repeat Steps 1 through 4 in reverse. The belt should be adjusted so that it is just tight enough not to slip. CAUTION: Over tightening the belt could cause premature wear on the chuck bearings and/or cause damage to the motor.



FIG 4